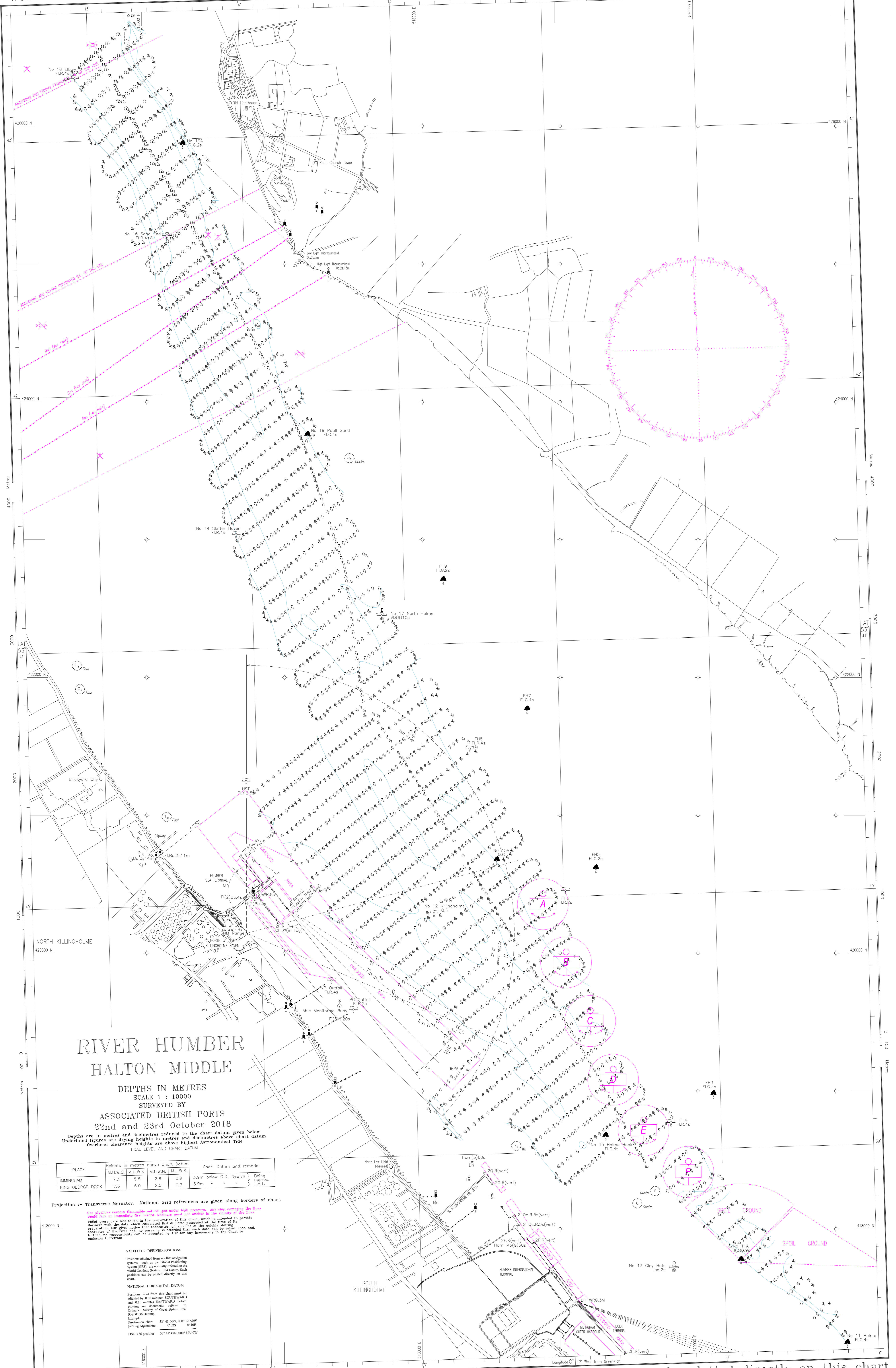


WGS 84 POSITIONS can be plotted directly on this chart

© Copyright 2018. All rights reserved. No part of this product may be reproduced in any form (including photocopying or by electronic means) without prior permission.



# RIVER HUMBER HALTON MIDDLE

DEPTHS IN METRES  
SCALE 1 : 10000  
SURVEYED BY  
ASSOCIATED BRITISH PORTS  
22nd and 23rd October 2018  
Depths are in metres and decimetres reduced to the chart datum given below  
Underlined figures are drying heights in metres and decimetres above chart datum  
Overhead clearance heights are above Highest Astronomical Tide  
TIDAL LEVEL AND CHART DATUM

PLACE	heights in metres above Chart Datum				Chart Datum and remarks
	M.H.W.S.	M.H.W.N.	M.L.W.N.	M.L.W.S.	
WIMBORNE	7.3	5.8	2.6	0.9	3.9m below O.D. Newlyn
KING GEORGE DOCK	7.6	6.0	2.5	0.7	Being approx. L.A.T.

Projection - Transverse Mercator. National Grid references are given along borders of chart.  
See pipelines contain flammable natural gas under high pressure. Any ship damaging the lines should be an immediate fire hazard. Masters must not anchor in the vicinity of the lines.  
Great care was taken in the preparation of this Chart, which is intended to provide mariners with the data which Associated British Ports possess at the time of the preparation. It gives notice that thereafter, on account of the quick shifting nature of the seabed, it is necessary to advise that such data can be relied upon and, further, no responsibility can be accepted by ABP for any inaccuracy in the Chart or omission therefrom.

**SATELLITE-DERIVED POSITIONS**  
Positions obtained from satellite navigation systems, such as the Global Positioning System (GPS), are normally referred to the World Geodetic System 1984 Datum. Such positions can be plotted directly on this chart.  
**NATIONAL HORIZONTAL DATUM**  
Positions read from this chart must be adjusted by 10 metres SOUTHWARD and 1.0 metre EASTWARD before plotting on documents referred to the Ordnance Survey of Great Britain 1936 (OSGB 36) Datum.  
Example:  
Position chart 53° 41' 50N 009° 12' 50W  
In long adjustment 0° 02S 0° 01E  
OSGB 36 position 53° 41' 48N 009° 12' 49W

WGS 84 POSITIONS can be plotted directly on this chart